

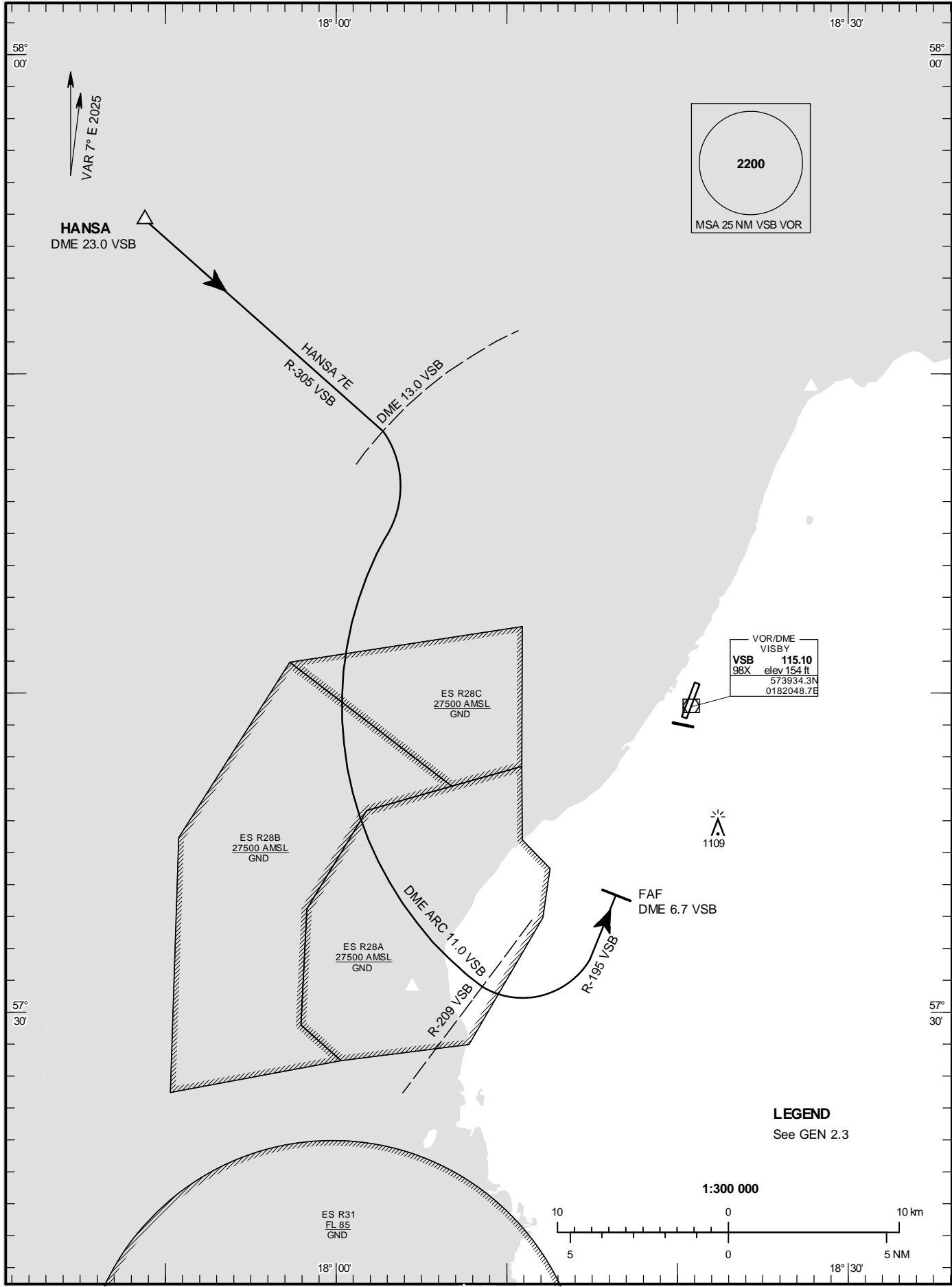
**STANDARD ARRIVAL  
CHART - INSTRUMENT  
(STAR) - ICAO**

HGT and ALT in ft  
BRG are MAG  
**TA 5000 ft AMSL**

VISBY TOWER	120.305
VISBY APPROACH	126.155

**VISBY  
RWY 03**

HANSA 7E



CHANGE: Editorial

---

**VISBY**

**ARRIVAL (STAR) RWY 03**

REMARK

Descent to a minimum altitude for an arrival route must be initiated until an ATC clearance to this altitude or an approach clearance has been received.

**HANSA 7E (HANSA SEVEN ECHO ARRIVAL)**

At HANSA intercept R-305 VSB and proceed DME 13.0 VSB. Turn right and proceed on DME ARC 11.0 VSB. At R-209 VSB turn left to intercept R-195 VSB, not below 2200 ft until FAF.